

2006 Airbus EC120B SN 1456 N822ET  
Based near Grand Rapids, MI



## Airframe

Total Time: 1,326  
Landings: 2,354  
CofA Date: 2 Nov 2006

## Engine Turbomecca Arrius 2F

Serial Number: 34520  
TTSN: 1,256  
N1 Cycles: 1,142  
N2 Cycles: 1,389  
Hours Remaining: 2,244  
Engine Inspection: Due 6/29/2021

## Additional Features

- Dual Chelton EFIS
- USB Charging Port (on PS 8000G)
- 11" Apple iPad with WiFi and LTE on Guardian Avionics Panel Mount
- Garmin GTX-345 ADS-B In and Out Compliant
- Fresh 12 year inspection

2006 Airbus EC120B SN 1456 N822ET

Based near Grand Rapids, MI



## Avionics

- Pilot (Right) Side Dual Chelton EFIS
- Guardian Avionics iPad Panel Mount with cooling fan
- Garmin GNS-430W GPS / Com 1 / Nav 1
- Garmin GTX-345 Transponder ADS-B Out and In (displays on iPad)
- Garmin GTR-225 Com 2 Unit
- Garmin GDL-51R for Bluetooth Connectivity
- PS Engineering PMA-8000G Audio Panel ([More Info](#))



This aircraft and its owner are being EXCLUSIVELY represented by Chase Aviation Company, LLC. The specifications contained are intended to be used as preliminary information only. A pre-purchase inspection should be performed by a third party maintenance facility to determine the accuracy of this spec sheet and overall mechanical condition of this aircraft.

2006 Airbus EC120B SN 1456 N822ET

Based near Grand Rapids, MI

## Interior

The interior features seating for 4 passengers plus pilot and was completed by Texas Aviation Services at original purchase, 2007.



This aircraft and its owner are being EXCLUSIVELY represented by Chase Aviation Company, LLC. The specifications contained are intended to be used as preliminary information only. A pre-purchase inspection should be performed by a third party maintenance facility to determine the accuracy of this spec sheet and overall mechanical condition of this aircraft.

# 2006 Airbus EC120B SN 1456 N822ET

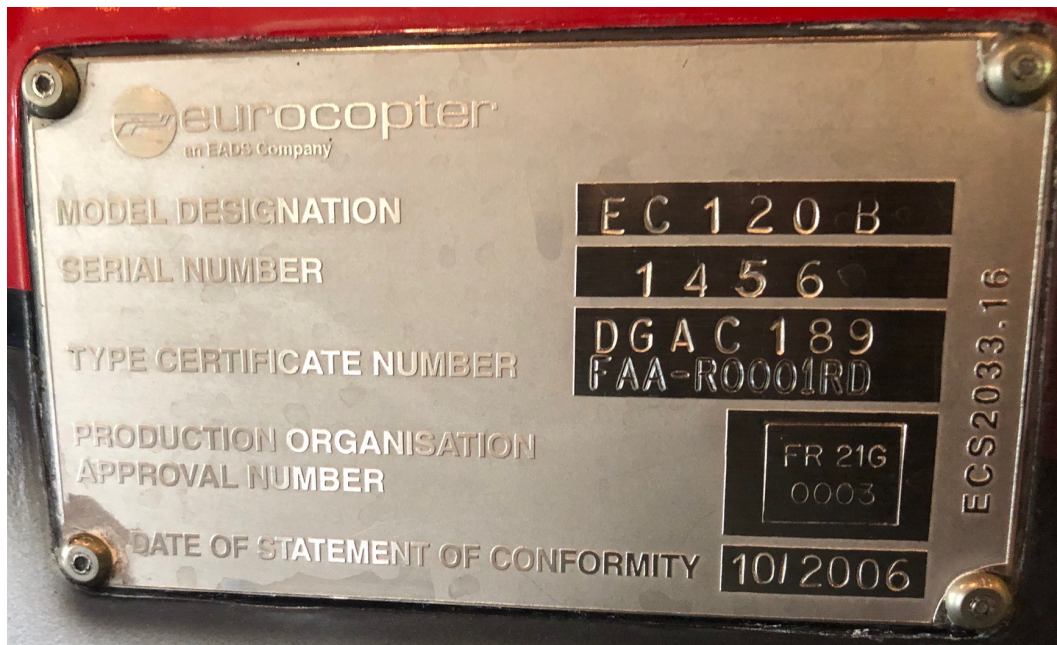
Based near Grand Rapids, MI

## Aircraft Maintenance / History

Just completed the major 12 year inspection along with 12, 24, and 72 month inspections by Copter Doctor, Inc an industry leader in Airbus EC120 inspections. Complete component status tracking is available upon request.

As Of:	Inspection	Interval	Last Comply	Next Due	Remaining	Percent
4/11/20	12 mo / 100hr	365d	January 2020	January 2021	280d	77%
1,326	24 mo / 500hr	711d	January 2020	January 2022	658d	93%
TTAF	72 mo / 1500hr	2190d	January 2020	January 2026	2121d	97%
	12 year	4380d	January 2020	December 2031	4279d	98%
	Main Battery OH	730d	January 2020	February 2022	661d	91%
	91.411/413	730d	January 2020	February 2022	661d	91%
	New Left Windshield	O/C	March 2020			
	Starter Generator	300hr	1318	1618	292	97%
	Fuel Control Unit	2800	0	2800	1474	53%

The specifications and all other information contained in this document are intended to be used as preliminary information only and must be verified prior to purchase. Aircraft times, cycles and maintenance status sheet are approximate only.



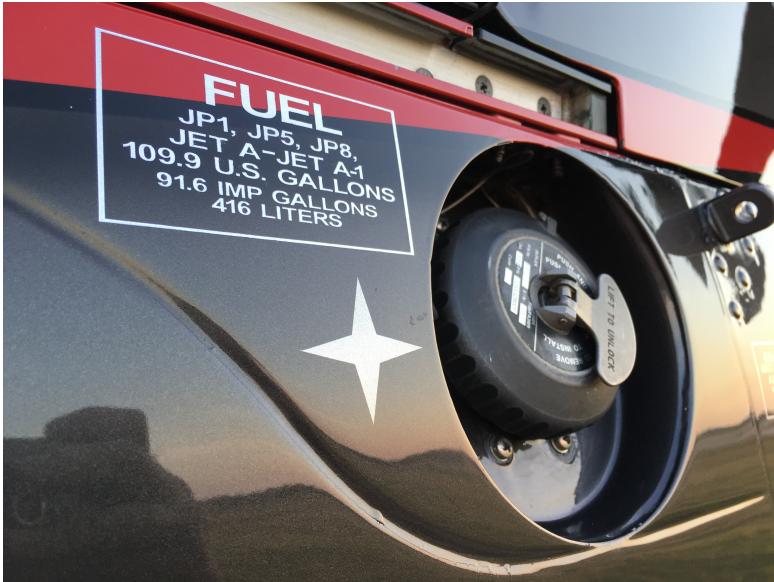
This aircraft and its owner are being EXCLUSIVELY represented by Chase Aviation Company, LLC. The specifications contained are intended to be used as preliminary information only. A pre-purchase inspection should be performed by a third party maintenance facility to determine the accuracy of this spec sheet and overall mechanical condition of this aircraft.

2006 Airbus EC120B SN 1456 N822ET

Based near Grand Rapids, MI

## Exterior

The aircraft was completely stripped and repainting in 2014 by Mitcher T. Custom Painting, Middleville, Michigan and brought back to them post 12 year inspection touchup work completed to perfection.



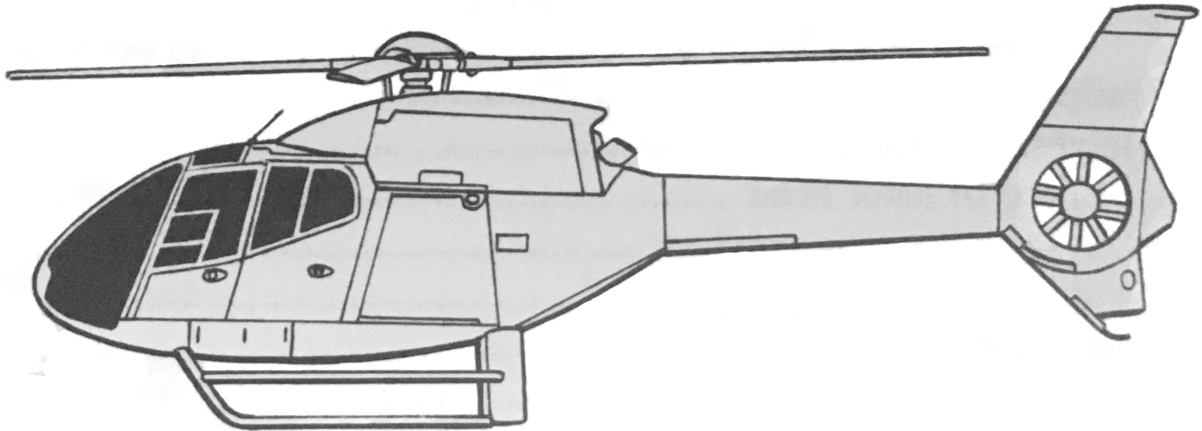
For many more photos and video:

[Visit Website](#)

This aircraft and its owner are being EXCLUSIVELY represented by Chase Aviation Company, LLC. The specifications contained are intended to be used as preliminary information only. A pre-purchase inspection should be performed by a third party maintenance facility to determine the accuracy of this spec sheet and overall mechanical condition of this aircraft.

2006 Airbus EC120B SN 1456 N822ET  
Based near Grand Rapids, MI

## Airbus EC120B Colibri Performance



### Performance (Generic)

Never Exceed Speed (Vne).....	150kt
Crusing Speed: Max .....	122kt
Econ .....	103kt
Max Rate of Climb at Sea Level .....	1800 ft/min
Service Ceiling .....	17,000 ft
Hovering Ceiling: IGE .....	9260 ft
OGE .....	7,620 ft
Range No Reserves .....	393 nm
Endurance No Reserves .....	3hr 50m

### Weight and Balance

Empty Weight.....	2425 lbs
Empty CG (with full aft balance) .....	167.8 in
Max Gross Weight .....	3780 lbs
Useful Load .....	1355 lbs



This aircraft and its owner are being EXCLUSIVELY represented by Chase Aviation Company, LLC. The specifications contained are intended to be used as preliminary information only. A pre-purchase inspection should be performed by a third party maintenance facility to determine the accuracy of this spec sheet and overall mechanical condition of this aircraft.